

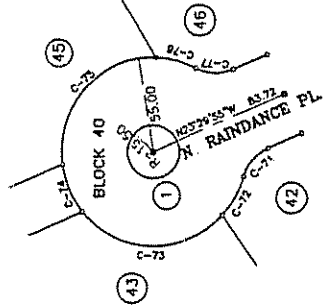




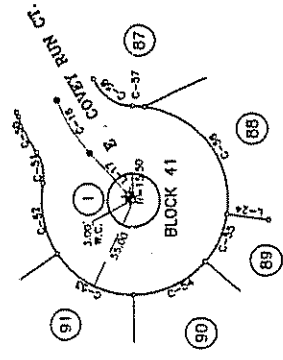
EX 810 97102

# BROOKWOOD SUBDIVISION NO. 7

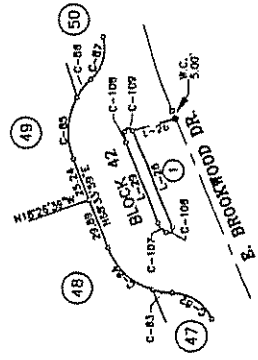
A PARCEL OF LAND SITUATED IN THE S1/2 OF SECTION 4,  
T.4N., R.1E., B.M., CITY OF EAGLE, ADA COUNTY, IDAHO,  
2003



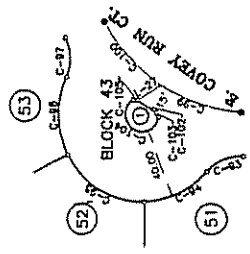
**BLOCK 40**



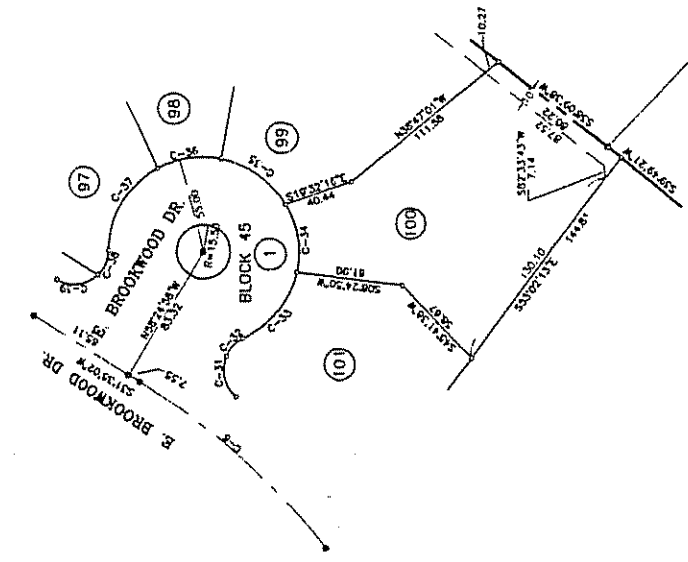
**BLOCK 41**



**BLOCK 42**

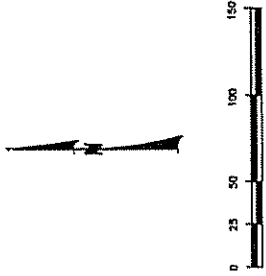


**BLOCK 43**

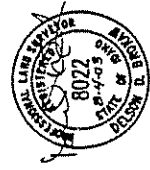


**BLOCK 45**

CURVE	RADIUS	LENGTH	CHORD	DELTA	TANGENT	BEARING	DISTANCE
C-1	400.00	145.48	73.55	2026.10	145.48	145.48	145.48
C-2	100.00	36.85	18.93	1108.41	36.85	36.85	36.85
C-3	20.00	14.41	7.17	216.35	14.41	14.41	14.41
C-4	45.00	50.84	27.46	5310.85	5310.85	5310.85	49.14
C-5	55.00	40.82	21.28	4716.47	4716.47	4716.47	38.70
C-6	55.00	47.41	25.28	4823.09	4823.09	4823.09	45.93
C-7	55.00	37.35	19.43	3554.59	3554.59	3554.59	38.94
C-8	55.00	36.40	22.25	3549.27	3549.27	3549.27	35.00
C-9	20.00	13.72	6.93	216.35	13.72	13.72	13.72
C-10	25.00	17.86	9.31	2873.81	2873.81	2873.81	24.30
C-11	25.00	21.66	11.80	3523.14	3523.14	3523.14	23.64
C-12	25.00	18.86	9.91	4313.39	4313.39	4313.39	18.42
C-13	25.00	42.80	22.53	4415.17	4415.17	4415.17	41.73
C-14	25.00	33.78	20.20	3501.22	3501.22	3501.22	31.66
C-15	25.00	47.25	25.21	4716.59	4716.59	4716.59	45.83
C-16	25.00	20.97	10.95	2709.41	2709.41	2709.41	26.34
C-17	25.00	21.38	11.10	2873.81	2873.81	2873.81	24.30
C-18	25.00	20.74	10.92	2873.81	2873.81	2873.81	23.65
C-19	25.00	22.59	12.01	3119.04	3119.04	3119.04	21.65
C-20	25.00	23.84	13.16	3292.17	3292.17	3292.17	20.80
C-21	25.00	64.74	34.95	6641.54	6641.54	6641.54	63.46
C-22	25.00	30.39	15.39	3139.14	3139.14	3139.14	30.00
C-23	25.00	34.28	17.79	3720.31	3720.31	3720.31	34.76
C-24	25.00	22.39	12.01	3119.04	3119.04	3119.04	21.65
C-25	25.00	39.12	18.47	3944.47	3944.47	3944.47	37.50
C-26	41.50	11.25	5.63	1539.32	1539.32	1539.32	11.25
C-27	41.50	37.13	19.91	5115.90	5115.90	5115.90	35.90
C-28	41.50	35.90	17.77	3928.24	3928.24	3928.24	33.33
C-29	41.50	37.31	19.43	3554.59	3554.59	3554.59	38.94
C-30	25.00	27.31	13.63	2873.81	2873.81	2873.81	26.69
C-31	25.00	23.48	12.09	2749.35	2749.35	2749.35	22.83
C-32	25.00	41.66	22.13	4744.31	4744.31	4744.31	46.47
C-33	25.00	45.97	24.75	4819.12	4819.12	4819.12	45.11
C-34	25.00	43.29	23.09	4409.24	4409.24	4409.24	41.36
C-35	25.00	43.29	23.09	4409.24	4409.24	4409.24	41.36
C-36	25.00	46.87	25.16	4673.35	4673.35	4673.35	45.16
C-37	25.00	46.87	25.16	4673.35	4673.35	4673.35	45.16
C-38	25.00	46.87	25.16	4673.35	4673.35	4673.35	45.16
C-39	25.00	46.87	25.16	4673.35	4673.35	4673.35	45.16
C-40	25.00	46.87	25.16	4673.35	4673.35	4673.35	45.16
C-41	25.00	46.87	25.16	4673.35	4673.35	4673.35	45.16
C-42	25.00	46.87	25.16	4673.35	4673.35	4673.35	45.16
C-43	25.00	46.87	25.16	4673.35	4673.35	4673.35	45.16
C-44	25.00	46.87	25.16	4673.35	4673.35	4673.35	45.16
C-45	25.00	46.87	25.16	4673.35	4673.35	4673.35	45.16
C-46	25.00	46.87	25.16	4673.35	4673.35	4673.35	45.16
C-47	25.00	46.87	25.16	4673.35	4673.35	4673.35	45.16
C-48	25.00	46.87	25.16	4673.35	4673.35	4673.35	45.16
C-49	25.00	46.87	25.16	4673.35	4673.35	4673.35	45.16
C-50	25.00	46.87	25.16	4673.35	4673.35	4673.35	45.16
C-51	25.00	46.87	25.16	4673.35	4673.35	4673.35	45.16
C-52	25.00	46.87	25.16	4673.35	4673.35	4673.35	45.16
C-53	25.00	46.87	25.16	4673.35	4673.35	4673.35	45.16
C-54	25.00	46.87	25.16	4673.35	4673.35	4673.35	45.16
C-55	25.00	46.87	25.16	4673.35	4673.35	4673.35	45.16
C-56	25.00	46.87	25.16	4673.35	4673.35	4673.35	45.16
C-57	25.00	46.87	25.16	4673.35	4673.35	4673.35	45.16
C-58	25.00	46.87	25.16	4673.35	4673.35	4673.35	45.16
C-59	25.00	46.87	25.16	4673.35	4673.35	4673.35	45.16
C-60	25.00	46.87	25.16	4673.35	4673.35	4673.35	45.16
C-61	25.00	46.87	25.16	4673.35	4673.35	4673.35	45.16
C-62	25.00	46.87	25.16	4673.35	4673.35	4673.35	45.16
C-63	25.00	46.87	25.16	4673.35	4673.35	4673.35	45.16
C-64	25.00	46.87	25.16	4673.35	4673.35	4673.35	45.16
C-65	25.00	46.87	25.16	4673.35	4673.35	4673.35	45.16
C-66	25.00	46.87	25.16	4673.35	4673.35	4673.35	45.16
C-67	25.00	46.87	25.16	4673.35	4673.35	4673.35	45.16
C-68	25.00	46.87	25.16	4673.35	4673.35	4673.35	45.16
C-69	25.00	46.87	25.16	4673.35	4673.35	4673.35	45.16
C-70	25.00	46.87	25.16	4673.35	4673.35	4673.35	45.16
C-71	25.00	46.87	25.16	4673.35	4673.35	4673.35	45.16
C-72	25.00	46.87	25.16	4673.35	4673.35	4673.35	45.16
C-73	25.00	46.87	25.16	4673.35	4673.35	4673.35	45.16
C-74	25.00	46.87	25.16	4673.35	4673.35	4673.35	45.16
C-75	25.00	46.87	25.16	4673.35	4673.35	4673.35	45.16
C-76	25.00	46.87	25.16	4673.35	4673.35	4673.35	45.16
C-77	25.00	46.87	25.16	4673.35	4673.35	4673.35	45.16
C-78	25.00	46.87	25.16	4673.35	4673.35	4673.35	45.16
C-79	25.00	46.87	25.16	4673.35	4673.35	4673.35	45.16
C-80	25.00	46.87	25.16	4673.35	4673.35	4673.35	45.16
C-81	25.00	46.87	25.16	4673.35	4673.35	4673.35	45.16
C-82	25.00	46.87	25.16	4673.35	4673.35	4673.35	45.16
C-83	25.00	46.87	25.16	4673.35	4673.35	4673.35	45.16
C-84	25.00	46.87	25.16	4673.35	4673.35	4673.35	45.16
C-85	25.00	46.87	25.16	4673.35	4673.35	4673.35	45.16
C-86	25.00	46.87	25.16	4673.35	4673.35	4673.35	45.16
C-87	25.00	46.87	25.16	4673.35	4673.35	4673.35	45.16
C-88	25.00	46.87	25.16	4673.35	4673.35	4673.35	45.16
C-89	25.00	46.87	25.16	4673.35	4673.35	4673.35	45.16
C-90	25.00	46.87	25.16	4673.35	4673.35	4673.35	45.16
C-91	25.00	46.87	25.16	4673.35	4673.35	4673.35	45.16
C-92	25.00	46.87	25.16	4673.35	4673.35	4673.35	45.16
C-93	25.00	46.87	25.16	4673.35	4673.35	4673.35	45.16
C-94	25.00	46.87	25.16	4673.35	4673.35	4673.35	45.16
C-95	25.00	46.87	25.16	4673.35	4673.35	4673.35	45.16
C-96	25.00	46.87	25.16	4673.35	4673.35	4673.35	45.16
C-97	25.00	46.87	25.16	4673.35	4673.35	4673.35	45.16
C-98	25.00	46.87	25.16	4673.35	4673.35	4673.35	45.16
C-99	25.00	46.87	25.16	4673.35	4673.35	4673.35	45.16
C-100	25.00	46.87	25.16	4673.35	4673.35	4673.35	45.16



LINE	BEARING	LENGTH
L-1	N 89° 45' 00" E	10.00
L-2	S 89° 45' 00" E	10.00
L-3	S 15° 21' 28" E	23.66
L-4	N 89° 45' 00" E	10.00
L-5	N 89° 45' 00" E	10.00
L-6	N 89° 45' 00" E	10.00
L-7	N 89° 45' 00" E	10.00
L-8	N 89° 45' 00" E	10.00
L-9	N 89° 45' 00" E	10.00
L-10	N 89° 45' 00" E	10.00



TOOTHMAN-ORTON ENGINEERING COMPANY  
1777 S. WASHINGTON BLVD. BOISE, IDAHO 83725  
(208) 333-7788



# BROOKWOOD SUBDIVISION NO. 7

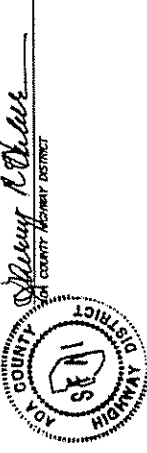
A PARCEL OF LAND SITUATED IN THE S1/2 OF SECTION 4,  
T.4N., R.1E., B.M., CITY OF EAGLE, ADA COUNTY, IDAHO,  
2003

### APPROVAL OF CITY ENGINEER

I, THE UNDERSIGNED CITY ENGINEER IN AND FOR THE CITY OF EAGLE, ADA COUNTY, IDAHO, HEREBY APPROVE THIS PLAT OF "BROOKWOOD SUBDIVISION NO. 7".

*[Signature]*  
CITY ENGINEER - EAGLE, IDAHO

ADA COUNTY HIGHWAY DISTRICT COMMISSIONERS ACCEPTANCES  
THE FOREGOING PLAT WAS ACCEPTED AND APPROVED BY THE BOARD OF ADA COUNTY HIGHWAY DISTRICT COMMISSIONERS ON THE 14th DAY OF April, 2003.



### CERTIFICATE OF COUNTY SURVEYOR

I, THE UNDERSIGNED, REGISTERED SURVEYOR FOR ADA COUNTY, IDAHO, DO HEREBY CERTIFY THAT I HAVE CHECKED THIS PLAT AND THAT IT COMPLES WITH THE STATE OF IDAHO CODE RELATING TO PLATS AND SURVEYS.



*[Signature]*  
ADA COUNTY SURVEYOR FEELS 8030

### APPROVAL OF CITY COUNCIL

I, THE UNDERSIGNED CITY CLERK IN AND FOR THE CITY OF EAGLE, ADA COUNTY, IDAHO, HEREBY CERTIFY THAT AT A REGULAR MEETING OF THE CITY COUNCIL HELD AT THE CITY OF EAGLE, IDAHO, ON APRIL 14, 2003, THIS PLAT OF "BROOKWOOD SUBDIVISION NO. 7" WAS PRESENTED, READ AND APPROVED.



*[Signature]*  
CITY CLERK - EAGLE, IDAHO

### CERTIFICATE OF SURVEYOR

I, DELOW D. BROKING, DO HEREBY CERTIFY THAT I AM A REGISTERED LAND SURVEYOR IN THE STATE OF IDAHO AND THAT THIS PLAT AS DESCRIBED IN THE "CERTIFICATE OF OWNERS" WAS DRAWN FROM THE FIELD NOTES OF A SURVEY MADE ON THE GROUND UNDER MY DIRECT SUPERVISION AND ACCURATELY REPRESENTS THE POINTS PLATTED HEREON AND IS IN CONFORMITY WITH THE STATE OF IDAHO CODE RELATING TO PLATS AND SURVEYS.



DELOW D. BROKING  
IDaho No. 8022

### APPROVAL OF CENTRAL DISTRICT HEALTH DEPARTMENT

SUBDIVISION RESTRICTIONS OF THIS PLAT ARE HEREBY APPROVED ACCORDING TO THE LETTER TO BE FILED ON FILE WITH THE COUNTY RECORDER OR HIS AGENT LISTING THE CONDITIONS OF APPROVAL.

*[Signature]*  
CENTRAL DISTRICT HEALTH DEPARTMENT  
4/14/03



### CERTIFICATE OF COUNTY TREASURER

I, THE UNDERSIGNED, COUNTY TREASURER IN AND FOR THE COUNTY OF ADA, STATE OF IDAHO, FOR THE INSTRUMENTS OF I.C. 50-1203, DO HEREBY CERTIFY THAT ANY AND ALL CURRENT AND/OR DELINQUENT COUNTY PROPERTY TAXES FOR THE PROPERTY INCLUDED IN THIS SUBDIVISION HAVE BEEN PAID IN FULL. THIS CERTIFICATION IS VALID FOR THE NEXT FIFTY (50) DAYS ONLY.



DATE 8-14-2003  
*[Signature]*  
ADA COUNTY TREASURER

### CERTIFICATE OF COUNTY RECORDER

PLAT COPY  
STATE OF IDAHO § 55  
COUNTY OF ADA INSTRUMENT NUMBER 02424121A  
I HEREBY CERTIFY THAT THIS INSTRUMENT WAS FILED FOR RECORD AT THE REQUEST OF ARES DEVELOPMENT LLC, ALL 19 MINUTES PAST 4 O'CLOCK P.M. ON THIS DAY OF APRIL, 2003, AND WAS DULY RECORDED IN BOOK 810 OF PLATS AT PAGES 9100 THROUGH 9104.  
INSTRUMENT NUMBER 02424121A

A. MORGENTO  
COUNTY CLERK  
J. SANDA MORGENTO  
COUNTY CLERK

TOOTHMAN-ORTON ENGINEERING COMPANY

3770 CAMPUS DRIVE  
BOISE, IDAHO 83725  
(208) 333-2288