

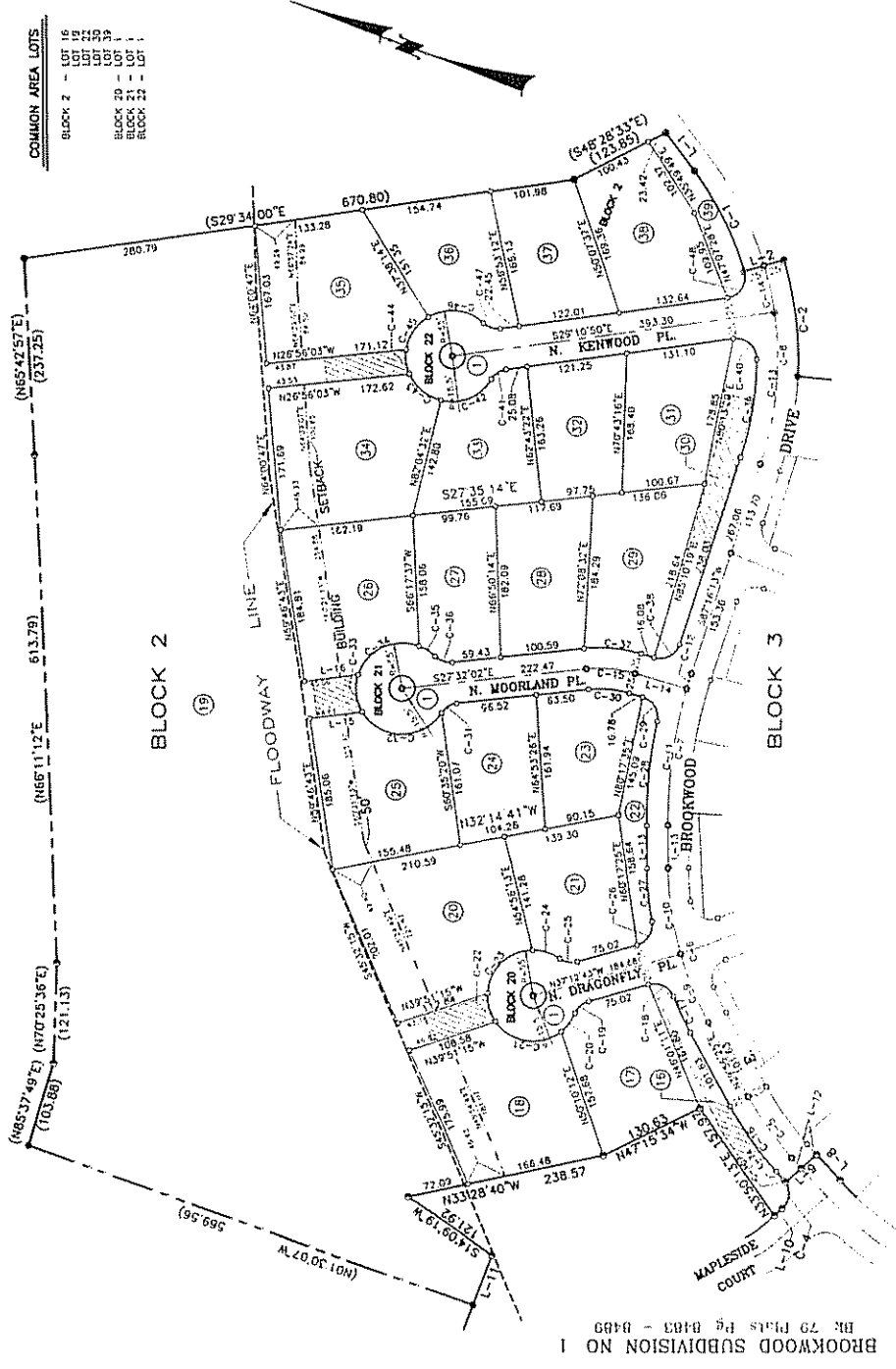
BROOKWOOD SUBDIVISION NO. 3

A PARCEL OF LAND SITUATED IN THE E 1/2 OF THE SW 1/4 OF SECTION 4, INCLUDING A PORTION OF LOT 5, BLOCK 3, OF BROOKWOOD SUBDIVISION No. 1, ALL IN T.4N., R.1E., B.M. CITY OF EAGLE, ADA COUNTY, IDAHO.

2000

COMMON AREA LOTS

BLOCK 2 -	LOT 16
	LOT 22
	LOT 29
BLOCK 20 -	LOT 1
BLOCK 21 -	LOT 1
BLOCK 22 -	LOT 1



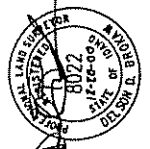
BK 79 Plans Pg B4B3 - B4B9

LINE TABLE

LINE	BEARING	LENGTH
L-1	N31°35'01"E	57.65
L-2	S37°34'30"E	30.00
L-3	N65°25'36"E	41.35
L-4	N65°11'12"E	513.79
L-5	N65°11'12"E	121.13
L-6	N65°11'12"E	613.79
L-7	N65°11'12"E	237.25
L-8	N65°11'12"E	172.62
L-9	N65°11'12"E	171.12
L-10	N65°11'12"E	133.28
L-11	N65°11'12"E	154.74
L-12	N65°11'12"E	101.98
L-13	N65°11'12"E	122.01
L-14	N65°11'12"E	132.64
L-15	N65°11'12"E	105.43
L-16	N65°11'12"E	23.44
L-17	N65°11'12"E	105.43
L-18	N65°11'12"E	105.43
L-19	N65°11'12"E	105.43
L-20	N65°11'12"E	105.43
L-21	N65°11'12"E	105.43
L-22	N65°11'12"E	105.43
L-23	N65°11'12"E	105.43
L-24	N65°11'12"E	105.43
L-25	N65°11'12"E	105.43
L-26	N65°11'12"E	105.43
L-27	N65°11'12"E	105.43
L-28	N65°11'12"E	105.43
L-29	N65°11'12"E	105.43
L-30	N65°11'12"E	105.43
L-31	N65°11'12"E	105.43
L-32	N65°11'12"E	105.43
L-33	N65°11'12"E	105.43
L-34	N65°11'12"E	105.43

CURVE TABLE

CURVE	BEARING	LENGTH	TANGENT	DELTA	BEARING	CHORD
C-1	N31°35'01"E	57.65	20.520	142.00°	N115°00'00"E	115.64
C-2	S37°34'30"E	30.00	10.260	71.76°	S71°00'00"E	30.00
C-3	N65°25'36"E	41.35	14.219	21.05°	N44°04'51"E	41.35
C-4	N65°11'12"E	513.79	192.428	82.142°	N76°55'21"E	382.31
C-5	N65°11'12"E	121.13	45.54	17.525°	S57°45'00"E	121.13
C-6	N65°11'12"E	613.79	242.714	72.547°	S12°44'34"E	183.19
C-7	N65°11'12"E	237.25	81.93	17.525°	S57°45'00"E	237.25
C-8	N65°11'12"E	172.62	64.47	13.455°	N68°26'48"E	172.62
C-9	N65°11'12"E	171.12	64.47	13.455°	N68°26'48"E	171.12
C-10	N65°11'12"E	133.28	48.04	10.260°	N76°55'21"E	133.28
C-11	N65°11'12"E	154.74	57.65	13.455°	N68°26'48"E	154.74
C-12	N65°11'12"E	101.98	36.05	10.260°	N76°55'21"E	101.98
C-13	N65°11'12"E	122.01	42.81	13.455°	N68°26'48"E	122.01
C-14	N65°11'12"E	132.64	48.04	10.260°	N76°55'21"E	132.64
C-15	N65°11'12"E	105.43	36.05	10.260°	N76°55'21"E	105.43
C-16	N65°11'12"E	23.44	7.747°	172.475°	S12°44'34"E	23.44
C-17	N65°11'12"E	105.43	36.05	10.260°	N76°55'21"E	105.43
C-18	N65°11'12"E	105.43	36.05	10.260°	N76°55'21"E	105.43
C-19	N65°11'12"E	105.43	36.05	10.260°	N76°55'21"E	105.43
C-20	N65°11'12"E	105.43	36.05	10.260°	N76°55'21"E	105.43
C-21	N65°11'12"E	105.43	36.05	10.260°	N76°55'21"E	105.43
C-22	N65°11'12"E	105.43	36.05	10.260°	N76°55'21"E	105.43
C-23	N65°11'12"E	105.43	36.05	10.260°	N76°55'21"E	105.43
C-24	N65°11'12"E	105.43	36.05	10.260°	N76°55'21"E	105.43
C-25	N65°11'12"E	105.43	36.05	10.260°	N76°55'21"E	105.43
C-26	N65°11'12"E	105.43	36.05	10.260°	N76°55'21"E	105.43
C-27	N65°11'12"E	105.43	36.05	10.260°	N76°55'21"E	105.43
C-28	N65°11'12"E	105.43	36.05	10.260°	N76°55'21"E	105.43
C-29	N65°11'12"E	105.43	36.05	10.260°	N76°55'21"E	105.43
C-30	N65°11'12"E	105.43	36.05	10.260°	N76°55'21"E	105.43
C-31	N65°11'12"E	105.43	36.05	10.260°	N76°55'21"E	105.43
C-32	N65°11'12"E	105.43	36.05	10.260°	N76°55'21"E	105.43
C-33	N65°11'12"E	105.43	36.05	10.260°	N76°55'21"E	105.43
C-34	N65°11'12"E	105.43	36.05	10.260°	N76°55'21"E	105.43
C-35	N65°11'12"E	105.43	36.05	10.260°	N76°55'21"E	105.43
C-36	N65°11'12"E	105.43	36.05	10.260°	N76°55'21"E	105.43
C-37	N65°11'12"E	105.43	36.05	10.260°	N76°55'21"E	105.43
C-38	N65°11'12"E	105.43	36.05	10.260°	N76°55'21"E	105.43
C-39	N65°11'12"E	105.43	36.05	10.260°	N76°55'21"E	105.43
C-40	N65°11'12"E	105.43	36.05	10.260°	N76°55'21"E	105.43
C-41	N65°11'12"E	105.43	36.05	10.260°	N76°55'21"E	105.43
C-42	N65°11'12"E	105.43	36.05	10.260°	N76°55'21"E	105.43
C-43	N65°11'12"E	105.43	36.05	10.260°	N76°55'21"E	105.43
C-44	N65°11'12"E	105.43	36.05	10.260°	N76°55'21"E	105.43
C-45	N65°11'12"E	105.43	36.05	10.260°	N76°55'21"E	105.43
C-46	N65°11'12"E	105.43	36.05	10.260°	N76°55'21"E	105.43
C-47	N65°11'12"E	105.43	36.05	10.260°	N76°55'21"E	105.43
C-48	N65°11'12"E	105.43	36.05	10.260°	N76°55'21"E	105.43
C-49	N65°11'12"E	105.43	36.05	10.260°	N76°55'21"E	105.43
C-50	N65°11'12"E	105.43	36.05	10.260°	N76°55'21"E	105.43



MONUMENT CERTIFICATE
 THIS IS TO CERTIFY THAT THIS PLAN IS BEING RECORDED FOR THE PURPOSE OF RECORDING THE MONUMENTS AND THAT ALL INTERESTS WILL BE SET FORTH HEREIN AND THAT THE MONUMENTS WILL BE SET FORTH HEREIN.
 WITNESS MY HAND AND SEAL OF OFFICE THIS 15th DAY OF MARCH 2000.

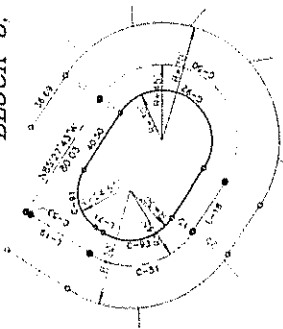
TOOTHMAN-ORTON ENGINEERING COMPANY
 977 COMMONS DRIVE
 BOZEMAN, MONTANA 59717
 (406) 333-3268



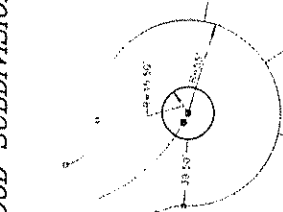
BROOKWOOD SUBDIVISION NO. 3

A PARCEL OF LAND SITUATED IN THE E 1/2 OF SECTION 4, INCLUDING A PORTION OF LOT 5, BLOCK 3, OF BROOKWOOD SUBDIVISION No. 1, ALL IN T.4N., R.1E., B.M., CITY OF EAGLE, ADA COUNTY, IDAHO.

2000



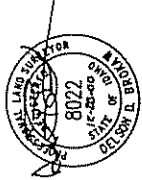
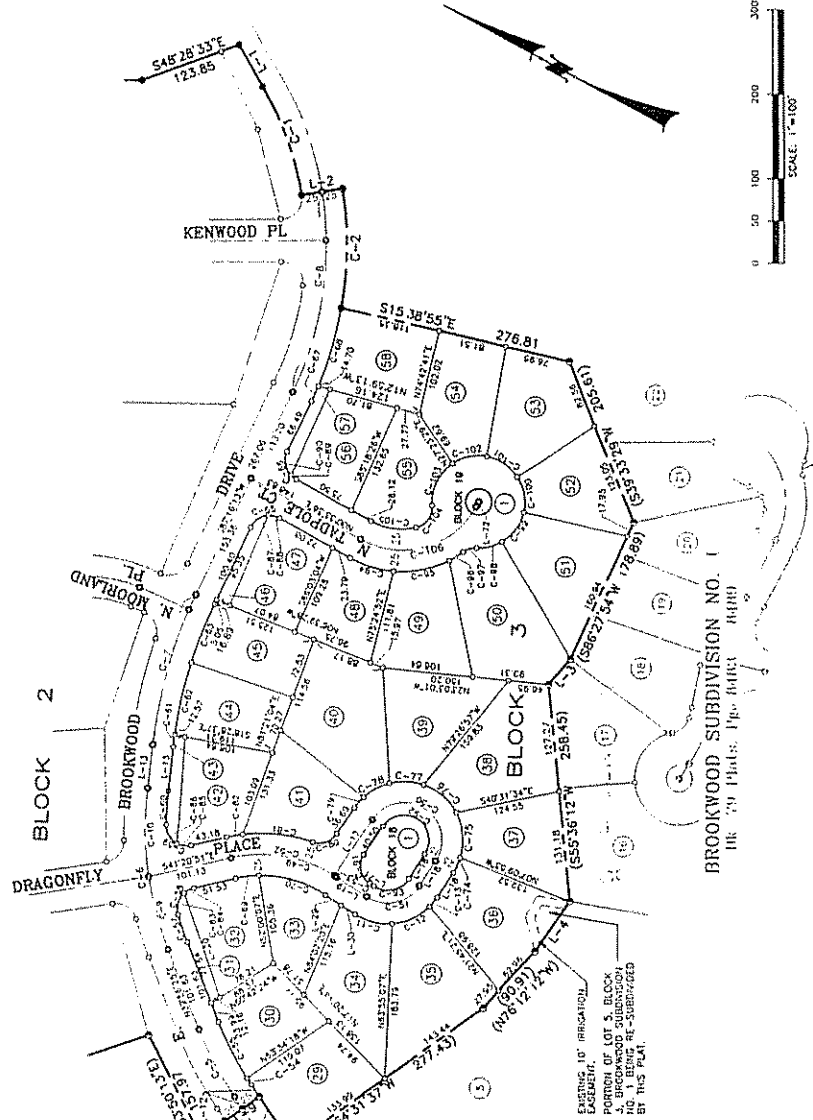
LOT 1
BLOCK 18



LOT 1
BLOCK 19

COMMON AREA LOTS
 BLOCK 3 - LOT 28
 LOT 31
 LOT 32
 LOT 47
 LOT 56
 BLOCK 18 - LOT 1
 BLOCK 19 - LOT 1

CURVE	BEARS	LENGTH	TANGENT	DELTA	CHORD	CHORD
C-1	374.00	136.39	68.76	207.9070	142.0017	135.64
C-2	428.00	142.19	71.76	191.9070	141.52	141.52
C-3	274.00	28.13	14.07	417.37	142.4279	28.13
C-4	25.00	4.93	2.46	854.752	37.6125	4.93
C-5	400.00	153.31	76.65	125.448	53.54426	153.31
C-6	500.00	166.07	83.03	172.2306	57.23443	166.07
C-7	400.00	144.78	72.39	145.9054	146.59245	144.78
C-8	400.00	89.70	45.04	125.9531	54.7131	89.70
C-9	400.00	105.41	52.70	150.5355	56.2703	105.41
C-10	400.00	111.14	55.57	155.1179	57.8275	111.14
C-11	70.00	20.50	10.25	270.044	21.044	20.50
C-12	70.00	20.50	10.25	270.044	21.044	20.50
C-13	70.00	20.50	10.25	270.044	21.044	20.50
C-14	105.00	135.14	67.57	145.5308	105.1177	135.14
C-15	45.00	11.17	5.58	182.6907	5.5774	11.17
C-16	185.00	70.69	35.34	95.0500	70.69	70.69
C-17	185.00	70.69	35.34	95.0500	70.69	70.69
C-18	185.00	70.69	35.34	95.0500	70.69	70.69
C-19	375.00	141.37	70.69	127.330	141.37	141.37
C-20	375.00	141.37	70.69	127.330	141.37	141.37
C-21	375.00	141.37	70.69	127.330	141.37	141.37
C-22	375.00	141.37	70.69	127.330	141.37	141.37
C-23	375.00	141.37	70.69	127.330	141.37	141.37
C-24	375.00	141.37	70.69	127.330	141.37	141.37
C-25	375.00	141.37	70.69	127.330	141.37	141.37
C-26	375.00	141.37	70.69	127.330	141.37	141.37
C-27	375.00	141.37	70.69	127.330	141.37	141.37
C-28	375.00	141.37	70.69	127.330	141.37	141.37
C-29	375.00	141.37	70.69	127.330	141.37	141.37
C-30	375.00	141.37	70.69	127.330	141.37	141.37
C-31	375.00	141.37	70.69	127.330	141.37	141.37
C-32	375.00	141.37	70.69	127.330	141.37	141.37
C-33	375.00	141.37	70.69	127.330	141.37	141.37
C-34	375.00	141.37	70.69	127.330	141.37	141.37
C-35	375.00	141.37	70.69	127.330	141.37	141.37
C-36	375.00	141.37	70.69	127.330	141.37	141.37
C-37	375.00	141.37	70.69	127.330	141.37	141.37
C-38	375.00	141.37	70.69	127.330	141.37	141.37
C-39	375.00	141.37	70.69	127.330	141.37	141.37
C-40	375.00	141.37	70.69	127.330	141.37	141.37
C-41	375.00	141.37	70.69	127.330	141.37	141.37
C-42	375.00	141.37	70.69	127.330	141.37	141.37
C-43	375.00	141.37	70.69	127.330	141.37	141.37
C-44	375.00	141.37	70.69	127.330	141.37	141.37
C-45	375.00	141.37	70.69	127.330	141.37	141.37
C-46	375.00	141.37	70.69	127.330	141.37	141.37
C-47	375.00	141.37	70.69	127.330	141.37	141.37
C-48	375.00	141.37	70.69	127.330	141.37	141.37
C-49	375.00	141.37	70.69	127.330	141.37	141.37
C-50	375.00	141.37	70.69	127.330	141.37	141.37
C-51	375.00	141.37	70.69	127.330	141.37	141.37
C-52	375.00	141.37	70.69	127.330	141.37	141.37
C-53	375.00	141.37	70.69	127.330	141.37	141.37
C-54	375.00	141.37	70.69	127.330	141.37	141.37
C-55	375.00	141.37	70.69	127.330	141.37	141.37
C-56	375.00	141.37	70.69	127.330	141.37	141.37
C-57	375.00	141.37	70.69	127.330	141.37	141.37
C-58	375.00	141.37	70.69	127.330	141.37	141.37
C-59	375.00	141.37	70.69	127.330	141.37	141.37
C-60	375.00	141.37	70.69	127.330	141.37	141.37
C-61	375.00	141.37	70.69	127.330	141.37	141.37
C-62	375.00	141.37	70.69	127.330	141.37	141.37
C-63	375.00	141.37	70.69	127.330	141.37	141.37
C-64	375.00	141.37	70.69	127.330	141.37	141.37
C-65	375.00	141.37	70.69	127.330	141.37	141.37
C-66	375.00	141.37	70.69	127.330	141.37	141.37
C-67	375.00	141.37	70.69	127.330	141.37	141.37
C-68	375.00	141.37	70.69	127.330	141.37	141.37
C-69	375.00	141.37	70.69	127.330	141.37	141.37
C-70	375.00	141.37	70.69	127.330	141.37	141.37
C-71	375.00	141.37	70.69	127.330	141.37	141.37
C-72	375.00	141.37	70.69	127.330	141.37	141.37
C-73	375.00	141.37	70.69	127.330	141.37	141.37
C-74	375.00	141.37	70.69	127.330	141.37	141.37
C-75	375.00	141.37	70.69	127.330	141.37	141.37
C-76	375.00	141.37	70.69	127.330	141.37	141.37
C-77	375.00	141.37	70.69	127.330	141.37	141.37
C-78	375.00	141.37	70.69	127.330	141.37	141.37
C-79	375.00	141.37	70.69	127.330	141.37	141.37
C-80	375.00	141.37	70.69	127.330	141.37	141.37
C-81	375.00	141.37	70.69	127.330	141.37	141.37
C-82	375.00	141.37	70.69	127.330	141.37	141.37
C-83	375.00	141.37	70.69	127.330	141.37	141.37
C-84	375.00	141.37	70.69	127.330	141.37	141.37
C-85	375.00	141.37	70.69	127.330	141.37	141.37
C-86	375.00	141.37	70.69	127.330	141.37	141.37
C-87	375.00	141.37	70.69	127.330	141.37	141.37
C-88	375.00	141.37	70.69	127.330	141.37	141.37
C-89	375.00	141.37	70.69	127.330	141.37	141.37
C-90	375.00	141.37	70.69	127.330	141.37	141.37
C-91	375.00	141.37	70.69	127.330	141.37	141.37
C-92	375.00	141.37	70.69	127.330	141.37	141.37
C-93	375.00	141.37	70.69	127.330	141.37	141.37
C-94	375.00	141.37	70.69	127.330	141.37	141.37
C-95	375.00	141.37	70.69	127.330	141.37	141.37
C-96	375.00	141.37	70.69	127.330	141.37	141.37
C-97	375.00	141.37	70.69	127.330	141.37	141.37
C-98	375.00	141.37	70.69	127.330	141.37	141.37
C-99	375.00	141.37	70.69	127.330	141.37	141.37
C-100	375.00	141.37	70.69	127.330	141.37	141.37
C-101	375.00	141.37	70.69	127.330	141.37	141.37
C-102	375.00	141.37	70.69	127.330	141.37	141.37
C-103	375.00	141.37	70.69	127.330	141.37	141.37
C-104	375.00	141.37	70.69	127.330	141.37	141.37
C-105	375.00	141.37	70.69	127.330	141.37	141.37
C-106	375.00	141.37	70.69	127.330	141.37	141.37
C-107	375.00	141.37	70.69	127.330	141.37	141.37
C-108	375.00	141.37	70.69	127.330	141.37	141.37



MONUMENT CERTIFICATE
 THAT THE MONUMENTS THAT HAVE BEEN SET OR RECORDED UNDER THE COMPANION OF SAID LICENSED SURVEYOR 50-1133 AND THAT ALL INTERIOR MONUMENTS WILL BE SET WITHIN ONE YEAR FROM THE RECORDING DATE OF THIS PLAT.

TOOTHMAN-ORTON ENGINEERING COMPANY
 977 CHURCH FELLOWSHIP
 BOISE, IDAHO 83726
 (208) 333-2344

BROOKWOOD SUBDIVISION NO. 3

A PARCEL OF LAND SITUATED IN THE E 1/2 OF THE SW 1/4 OF SECTION 4, T.4N., R.1E., B.M., CITY OF EAGLE, ADA COUNTY, IDAHO. 2000

APPROVAL OF CITY ENGINEER

I, THE UNDERSIGNED CITY ENGINEER IN AND FOR THE CITY OF EAGLE, ADA COUNTY, IDAHO, HEREBY APPROVE THIS PLAN.

Kenneth R. Rice 9/27/00
CITY ENGINEER - EAGLE, IDAHO

APPROVAL OF CITY COUNCIL

I, THE UNDERSIGNED CITY CLERK IN AND FOR THE CITY OF EAGLE, ADA COUNTY, IDAHO, HEREBY CERTIFY THAT AT A REGULAR MEETING OF THE CITY COUNCIL HELD ON THE 27th DAY OF SEPTEMBER, 2000, THIS PLAN WAS DULY ACCEPTED AND APPROVED.



John K. Throckmole
CITY CLERK - EAGLE, IDAHO

CERTIFICATE OF COUNTY SURVEYOR

I, THE UNDERSIGNED REGISTERED SURVEYOR FOR ADA COUNTY, IDAHO, DO HEREBY CERTIFY THAT I HAVE REVIEWED THIS PLAN AND THAT IT COMPLES WITH THE STATE OF IDAHO CODE RELATING TO PLATS AND SURVEYS.



John E. Blawie 12/28/00
ADA COUNTY SURVEYOR #124 \$0.10

CERTIFICATE OF SURVEYOR

I, CELOY D. BRADSHAW, DO HEREBY CERTIFY THAT I AM A REGISTERED LAND SURVEYOR IN THE STATE OF IDAHO AND THAT THIS PLAN AS DESCRIBED IN THE CERTIFICATE OF CANCELED WAS OBTAINED FROM THE FIELD NOTES OF A SURVEY MADE BY THE GROUND WATER SURVEY DISTRICT SURVEYOR AND ACCURATELY REPRESENTS THE PLATS PLATED HEREON AND IS IN CONFORMITY WITH THE STATE OF IDAHO CODE RELATING TO PLATS AND SURVEYS.



Celoy D. Bradshaw
LAND SURVEYOR

APPROVAL OF CENTRAL DISTRICT HEALTH DEPARTMENT

SAVING RESTRICTIONS OF THIS PLAN ARE HEREBY REMOVED ACCORDING TO THE HEALTH DEPARTMENT APPROVAL BY FILE WITH THE COUNTY RECORDER OF HIS AGENT LISTING THE HEALTH DEPARTMENT APPROVAL.



Shirley K. Bane
CENTRAL DISTRICT HEALTH DEPARTMENT

ADA COUNTY HIGHWAY DISTRICT COMMISSIONERS ACCEPTANCE

THE FOREGOING PLAN HAS BEEN ACCEPTED AND APPROVED BY THE BOARD OF ADA COUNTY HIGHWAY DISTRICT COMMISSIONERS ON THE 27th DAY OF AUGUST, 2000.



Larry M. Baumgardner
ADA COUNTY HIGHWAY DISTRICT

CERTIFICATE OF COUNTY RECORDER

STATE OF IDAHO
COUNTY OF ADA
PLAT COPY
ASTRIUM NUMBER
I HEREBY CERTIFY THAT THIS INSTRUMENT WAS FILED FOR RECORD AT THE REQUEST OF
ADEL ROSSIGNOL, U.C. 802, 1000 S. 10th ST. AT 10:00 A.M. ON
THE 28th DAY OF SEPTEMBER, 2000, AND WAS FULLY RECEIVED IN BOOK 81
OF PAGES 47 PAGES 8120 THROUGH 8224
INSTRUMENT NUMBER 1.00.10.4307

S.L. Anderson
DEPUTY COUNTY RECORDER
DATE 2-6-01
BY OFFICE RECORDER

CERTIFICATE OF COUNTY TREASURER

I, THE UNDERSIGNED COUNTY TREASURER IN AND FOR THE COUNTY OF ADA, STATE OF IDAHO, DO HEREBY CERTIFY THAT ANY AND ALL CURRENT TAXES AND DELINQUENT TAXES OF THE COUNTY OF ADA, STATE OF IDAHO, AND ALL CURRENT AND DELINQUENT TAXES FOR THE PROPERTY INCLUDED IN THIS SUBDIVISION HAVE BEEN PAID IN FULL. THIS CERTIFICATION IS VALID FOR THE NEXT 180 (ONE HUNDRED AND EIGHTY) DAYS ONLY.



Lynda Smith
COUNTY TREASURER

DATE 12-28-00

TOOTHMAN-ORTON ENGINEERING COMPANY

9777 OXFORD BOULEVARD
BOISE, IDAHO 83724
(208) 485-2188